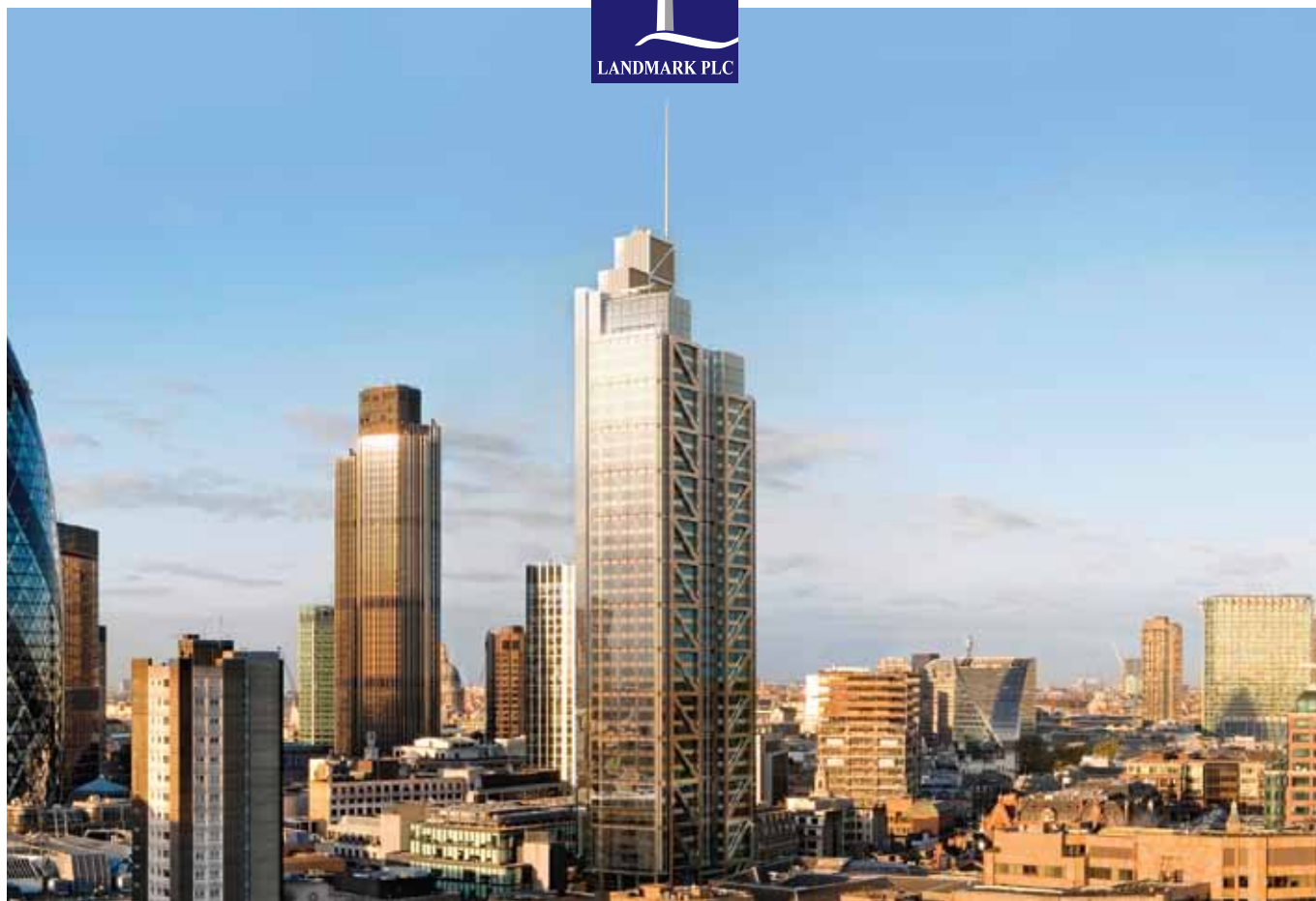


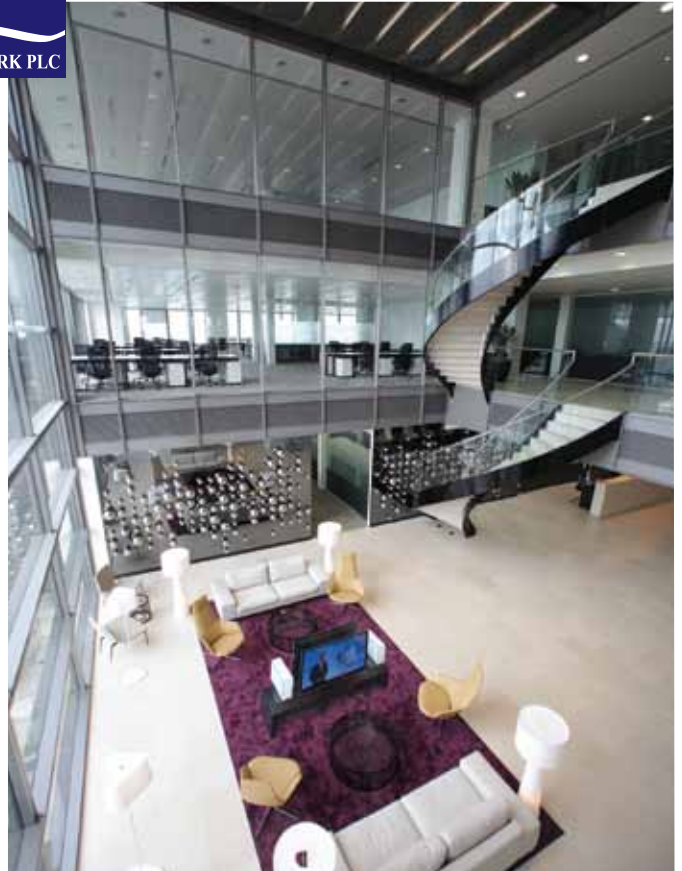
WORLD CLASS SERVICED OFFICES IN LONDON'S FINANCIAL DISTRICT



# LEVELS 17, 18 & 19 HERON TOWER LONDON EC2

[www.heron-tower.co.uk](http://www.heron-tower.co.uk)  
[www.landmarkplc.com](http://www.landmarkplc.com)  
+44 (0) 207 073 7800

# WORLD CLASS SERVICED OFFICES IN LONDON'S FINANCIAL DISTRICT



**FOR ALL ENQUIRIES CONTACT THE SALES TEAM:**

tel: +44 (0) 207 073 7800 or email: [heron@landmarkplc.com](mailto:heron@landmarkplc.com)

## HERON TOWER, 110 BISHOPSGATE, LONDON EC2

- Landmark Plc's state-of-the-art serviced offices are strategically positioned on the 17th, 18th and 19th levels.
- Spectacular panoramic views across the City of London.
- Located diagonally opposite Liverpool Street Station.
- This iconic building is situated amongst the world's leading Insurance, Legal, and Financial Services companies.

